

What's new in SIMATIC IT Preactor APS 2016

SIMATIC IT Preactor APS 2016 focuses on integration and reporting

Benefits

- Tight integration with SIMATIC IT Unified Architecture Discrete Manufacturing
- Improved integration with third-party products
- Better security with data encryption
- Easier report creation and customization
- Create feature-rich visual reports and dashboards

Summary

SIMATIC IT Preactor is a family of production planning and scheduling software products that improve the synchronization of your manufacturing processes, giving you greater visibility and control to increase utilization and on-time delivery while reducing inventory levels and waste. SIMATIC IT Preactor APS is a highly customizable capacity planning and scheduling package.

SIMATIC IT Preactor APS 2016, the latest release of the software, adds new features and capabilities that improve productivity and efficiency.

New features in SIMATIC IT Preactor APS 2016

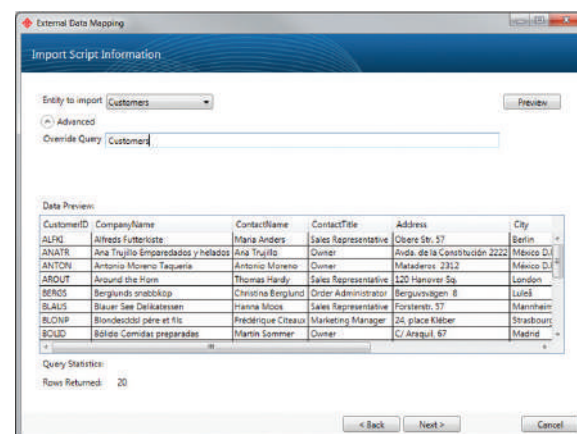
- External data mapping
- oData sources
- Encryption
- Report Viewer 2015

External data mapping

SIMATIC IT Preactor APS 2016 brings a new approach to seamlessly integrating with third-party systems for improved maintainability and ease of use. Known as external data mapping, this approach

allows for data from third-party systems to be consumed within SIMATIC IT Preactor, while that data is clearly owned and maintained in the third-party system. All of the conventional integration approaches such as scripted imports remain.

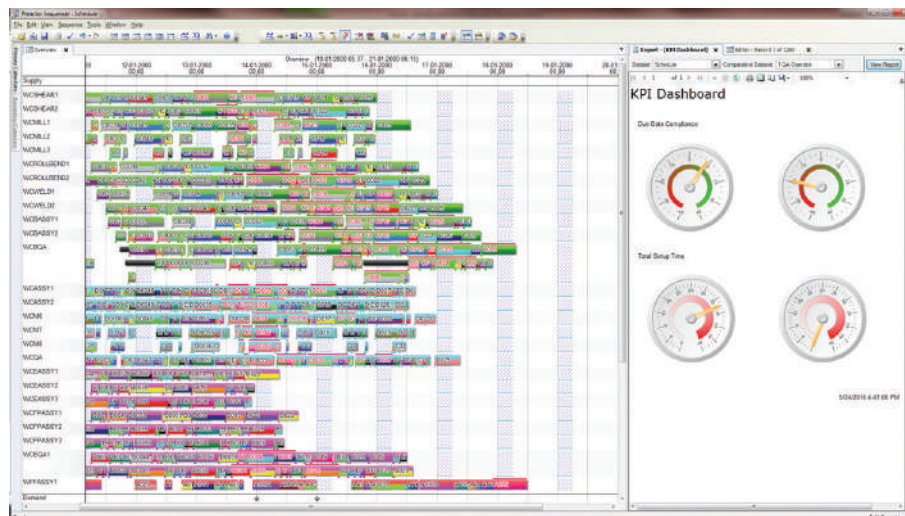
Applicable to all Advanced Planning (AP) and Advanced Scheduling (AS) products, external data mapping builds on existing integration techniques, adding new options for system integrators and giving clearer demarcation for users. Third-party data can also be embellished with additional information in SIMATIC IT Preactor. For example, if you carry an inventory of equipment in a database, the data can be mapped into SIMATIC IT Preactor, and none of the mapped data can be altered. However, information that may be absent (such as run rates) can still be owned by and maintained in SIMATIC IT Preactor.



What's new in SIMATIC IT Preactor APS 2016

oData sources

SIMATIC IT Preactor APS 2016 includes the ability to use Open Data Protocol (oData) sources as a provider. This can be used for both conventional import and for external data mapping, and allows for data surfaced through a representational state transfer (RESTful) application programming interface (API) to be consumed directly in Preactor. This new integration technology is accessible from the familiar integration wizard already present in Preactor, and once the data source is selected and configured, the data mapping steps are identical to the familiar process used for existing import and export scripts.



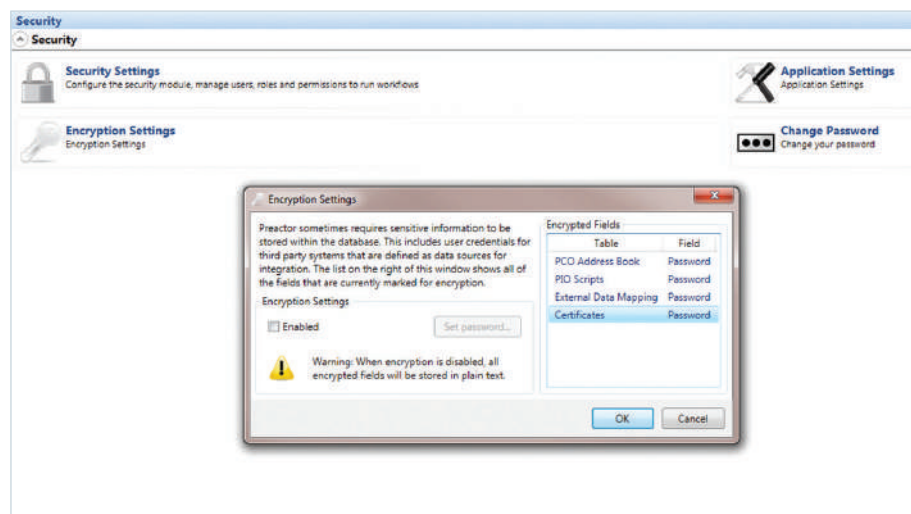
Encryption

Also new in SIMATIC IT Preactor APS 2016 is the capability to encrypt sensitive data held within the Preactor database. Users or system implementers can configure the selection of fields within the system to be encrypted. Encryption can be applied to any data; however, the primary purpose of this functionality is to allow the encryption of user credentials held in the system to enable access to, and interfacing with, secure systems.

Report Viewer 2015

SIMATIC IT Preactor APS 2016 also includes the latest version of Microsoft® Report Viewer in the sequencer window. This feature enables the creation and viewing of reports built using Microsoft Report Builder 3, which adds several new features such as sparklines, data bars, indicators and maps. For users and implementers accustomed to extending and building their own reports, the Report Parts feature allows

the re-use of report elements across multiple reports to accelerate the report creation and deployment process.



Siemens PLM Software
www.siemens.com/plm

Americas +1 314 264 8499
 Europe +44 (0) 1276 413200
 Asia-Pacific +852 2230 3308

© 2017 Siemens Product Lifecycle Management Software Inc. Siemens, the Siemens logo and SIMATIC are registered trademarks of Siemens AG. Preactor is a trademark or registered trademark of Preactor International Limited or any of its affiliates in the United States and in other countries. All other trademarks, registered trademarks or service marks belong to their respective holders.
 61893-A5 2/17 H