

# SIEMENS

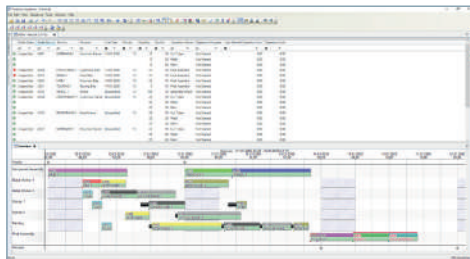
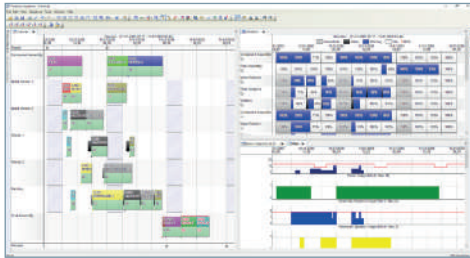
*Ingenuity for life*

Siemens PLM Software

## SIMATIC IT Preactor AS

Advanced scheduling software

[siemens.com/plm](http://siemens.com/plm)



The SIMATIC IT Preactor Advanced Scheduling range has been redesigned to introduce functionality that was previously only available at the highest level throughout the range. All products in the SIMATIC IT Preactor AS range are interactive, multi-constraint scheduling systems. This means that the availability of resources and additional constraints, such as tooling and materials, are all taken into consideration during the scheduling process to ensure an accurate model of your environment. Orders can be scheduled quickly using intelligent built-in rules, and the planner also has the ability to manually interact with the schedule to make changes based on his or her experience or new information.

SIMATIC IT Preactor 2015 features a whole new level of software customization, putting the power to change the way the system looks directly into the user's hands. This includes a new data editor grid that allows custom sorts, filters and groupings to be applied and enables the fields displayed to be selected while viewing the data. In addition, there is a powerful table and field editor tool that enables you to change the table and field names, redesign the dialogs and set the display attributes of the fields.

SIMATIC IT Preactor is designed to be easily integrated with other business systems to allow the simple retrieval of any required data, be that work order information from your ERP/MRP system or updates on operation progress from an MES or Salesforce.com system. This is supported by a simple, intuitive data exchange interface and a powerful workflow tool that allows the rapid deployment of integrations. The flexibility of SIMATIC IT Preactor integration tools and data setup makes it possible to implement the system entirely stand-alone, have it fully populated by data from other business systems or any scenario in-between. If information about product routings and BOMs is held within SIMATIC IT Preactor, then it is possible to use the system for ad hoc order inquiries, allowing the planner to give accurate delivery estimates in an instant.

### SIMATIC IT Preactor AS Standard

SIMATIC IT Preactor AS Standard has all of the features described above. It uses order-based scheduling to which the user can apply a ranking or weighting in order to prioritize the orders. It schedules based on availability of resources, additional constraints and the materials required for the order. During the scheduling process, SIMATIC IT Preactor AS Standard can take into account different operation run speeds on different resources, use sequence-dependent changeover times based on operation attributes and allow overlaps and slack time between operations.

### SIMATIC IT Preactor AS Professional

SIMATIC IT Preactor AS Professional has a number of additional schedule optimization rules to deal with problems such as minimizing changeover times, preferred sequencing and campaigning. Composite rules can also be built with the Preactor workflow tool. At the SIMATIC IT Preactor AS Professional level the user is also able to implement customer-specific rules about how materials are consumed and visualize their assembly process, from raw materials through to finished goods and sales orders in the Material Explorer. This shows a graphical view of the material dependencies as well as plots of stock levels over time. The user can see where shortages will occur and choose to keep them as a constraint or ignore them. In addition to this, SIMATIC IT Preactor AS professional can be used to model advanced resource constraints, such as rules about concurrent rule usage, and advanced inter-operation constraints, including limits on the time between operations and how much operation times can be extended by.

### SIMATIC IT Preactor AS Ultimate

SIMATIC IT Preactor AS Ultimate includes a developer license (SIMATIC IT Preactor Ultimate Access) that gives access to the full flexibility that is possible with a SIMATIC IT Preactor system. The database schema can be altered as required, including adding tables and fields, and via the Preactor programming interfaces it is possible to create custom rules to solve specific scheduling problems and create custom data manipulation tools for use with the SIMATIC IT Preactor workflow engine.

As the SIMATIC IT Preactor Ultimate Access license is a one-off purchase for a company, and is included in the price of the first Preactor Ultimate level system, this enables a cost-effective multi-licensing program for rolling out Preactor systems across multiple sites or scheduling environments.

### SIMATIC IT Preactor AS Ultimate Viewers

The SIMATIC IT Preactor AS Ultimate Viewer is a system designed to be linked to a Preactor AS Ultimate schedule. A Preactor AS Viewer system allows interaction with the schedule but the changes cannot be saved. They can be used in the sales office to track the progress of orders and carry out order inquiries against a read-only copy of the published schedule. Management can also use them to compare actual times with scheduled completion times to assess the performance of the production process. Viewers can also be used on a shop floor PC to provide the cell supervisor or machine operator with up to the minute work-to-lists generated by the scheduling system.



Siemens PLM Software  
[www.siemens.com/mom](http://www.siemens.com/mom)

Headquarters: +1 972 987 3000  
Americas: +1 314 264 8287  
Europe: +49 (0) 2624 9180-0  
Asia-Pacific: +86 (21) 3889 2765

© 2017 Siemens Product Lifecycle Management Software Inc. Siemens, the Siemens logo and SIMATIC IT are registered trademarks of Siemens AG. All other logos, trademarks, registered trademarks or service marks belong to their respective holders.  
62110-A3 2/17 W